

CRIMP CONNECTORS - DC SERIES

SPECIFICATIONS:

MECHANICAL:

Shell: steel

Finish: tin plate

Insulator: glass filled PBT UL94V0

ELECTRICAL:

Current Rating: 3 amps max.

Voltage Rating: 250 vac

Dielectric Withstanding Voltage: 1000 vac @ 1 minute

Insulation Resistance: 3000 meg ohm min @ 500 vdc

Contact Resistance: 15 milli ohms (mated)

Temperature Range: -55° TO +105° C

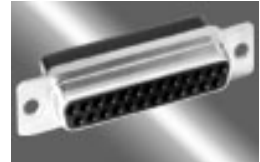
Available Sizes:

Male: 9, 15, 25, 37 & 50 position

Female: 9, 15, 25, 37 & 50 position

[RoHS Compliant](#)

[DOWNLOAD
DRAWING](#)

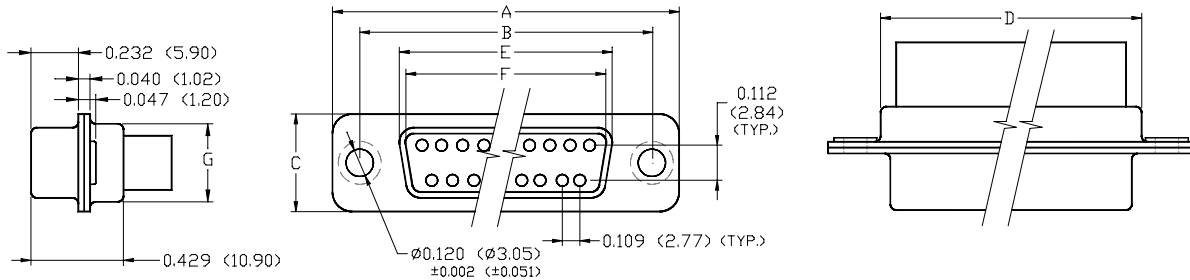
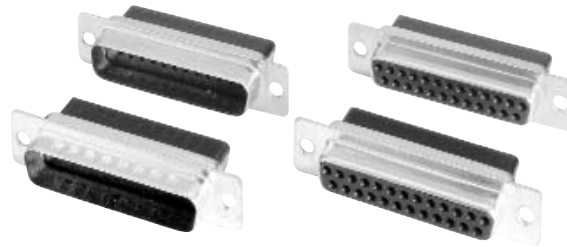


Part Numbers - Tin Plate

[CERTIFICATE OF COMPLIANCE - TIN PLATE](#)

| | | | |
|------------|-----------|------------|-----------|
| XDCE9PTE | XDCE9ST | XDCE15PTE | XDCE15ST |
| XDCE9PTEC | XDCE9STC | XDCE15PTEC | XDCE15STC |
| XDCE25PTE | XDCE25ST | XDCE37PTE | XDCE37ST |
| XDCE25PTEC | XDCE25STC | XDCE37PTEC | XDCE37STC |
| XDCE50PTE | XDCE50ST | XDCE50PTEC | XDCE50STC |

[Click here for Non-RoHS Compliant Product Part Number Page](#)



SPECIFICATIONS:

MECHANICAL

Shell: Steel
 Finish: Yellow Zinc or Tin Plate.
 Insulator: Thermoplastic UL94V-0 - Black
 Temperature Range: -55° to +105° C.
 Contacts: See Page 30

ELECTRICAL

Voltage Rating: 300 VDC.
 Current Rating: 3 Amps.
 IR: > 3000 Meg OHms.
 CR: < 15 Milliohms.

| CRIMP CONNECTORS - DC SERIES - DIMENSIONS | | | | | | INCHES [MM] | | |
|---|------------|-------------------------|-------------------------|-------------------------|-------------------------|--|--------------------------------------|-------------------------|
| No. of Contacts | Shell Size | A ±0.005 [±0.127] | B ±0.005 [±0.127] | C ±0.005 [±0.127] | D ±0.005 [±0.127] | E Max. Female ±0.005 [±0.127] | F Min. Male ±0.005 [±0.127] | G ±0.005 [±0.127] |
| 9 | E | 1.213 [30.81] | 0.984 [24.99] | 0.494 [12.55] | 0.759 [19.28] | 0.643 [16.33] | 0.666 [16.92] | 0.422 [10.72] |
| 15 | A | 1.541 [39.14] | 1.310 [33.27] | 0.494 [12.55] | 1.089 [27.65] | 0.971 [24.66] | 0.994 [25.25] | 0.422 [10.72] |
| 25 | B | 2.088 [53.04] | 1.850 [46.99] | 0.494 [12.55] | 1.626 [41.30] | 1.511 [38.38] | 1.534 [38.96] | 0.422 [10.72] |
| 37 | C | 2.730 [69.34] | 2.500 [63.50] | 0.494 [12.55] | 2.261 [57.44] | 2.159 [54.84] | 2.182 [55.42] | 0.422 [10.72] |
| 50 | D | 2.638 [67.00] | 2.406 [61.11] | 0.605 [15.37] | 2.178 [55.32] | 2.064 [52.43] | 2.079 [52.81] | 0.533 [13.54] |

ORDER INFORMATION

